

15-5PH Stainless

Smiths Advanced Metals

Rev: SAM/datasheets/stainless-steel-sheet/15-5ph-stainless/feb-2022

Page: 1 of 1

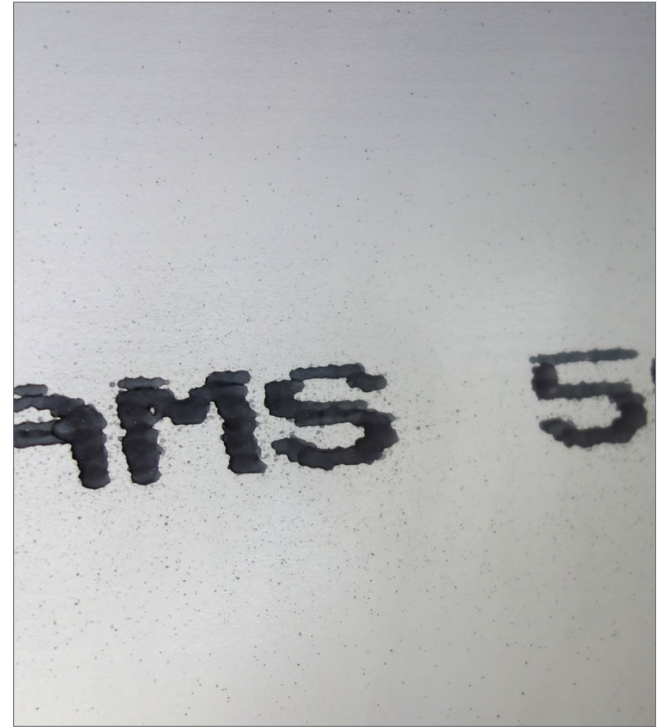
Precipitation Hardened Sheet

With improved toughness.

15-5PH offers high strength and toughness with good corrosion resistance and is a variant of 17-4PH. The alloy is a martensitic precipitation hardening stainless steel.

The material offers the same performance characteristics as 17-4PH, including excellent ductility and transverse notch toughness, but, in comparison, has superior overall toughness. A solitary, low-temperature heat treatment achieves all these characteristics. The heat-treatment temperature range may be adjusted to dictate the actual strength and toughness of the resulting alloy. 15-5PH offers good corrosion resistance and superior mechanical properties compared to 17-4PH in larger sections. Typical applications for 15-5PH sheet includes nuclear reactor components, military structural components and aerospace components.

We stock [15-5PH stainless steel sheets](#) in a wide range of thicknesses and conditions (including annealed, H900, H1025 and H1100 conditions). We also guillotine your stainless sheets to size in-house.



Grades / Specifications

- AMS5862
- ASTM A693
- BMS 7-240
- UNS S15500

Grades / Specifications

- Excellent transverse toughness
- Moderate corrosion resistance
- Good ductility strength
- Tougher than 17-4PH

* Chemical Composition (weight %)

	C	Mn	P	S	Si	Cr	Ni	Mo	Cu	Nb
min.						14.00	3.50		2.50	5xC
Max.	0.07	1.00	0.030	0.015	1.00	15.50	5.50	0.50	4.50	0.45

* As per AMS 5862

* Mechanical Properties (minimum)

Condition	Tensile Strength (MPa)	0.2% Proof Stress (MPa)	Elongation on 4D G.L. (%)	Reduction of Area
H900	1,310	1,172	10	35%
H925	1,172	1,069	10	35%
H1025	1,069	1,000	12	40%
H1075	1,000	862	13	45%
H1100	965	793	14	45%
H1150	931	724	16	50%

* Properties as per AMS 5862, for thicknesses over 15.88mm up to and including 101.60mm.

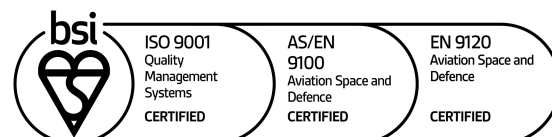
www.smithsadvanced.com

info@smithsadvanced.com



Stratton Business Park,
London Road, Biggleswade,
Bedfordshire SG18 8QB

Tel: **+44 (0) 1767 604710**



All information in our data sheet is based on approximate testing and is stated to the best of our knowledge and belief. It is presented apart from contractual obligations and does not constitute any guarantee of properties or of processing or application possibilities in individual cases. Our warranties and liabilities are stated exclusively in our terms of trading.