

A286

Smiths Advanced Metals

Rev: SAM/datasheets/stainless-steel-sheet/a286/feb-2022

Page: 1 of 1

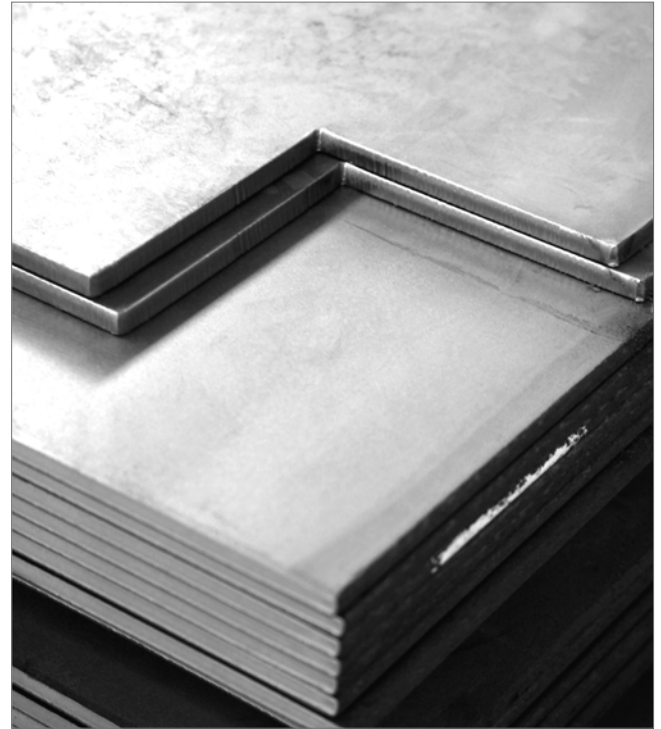
Nickel Chromium Stainless Sheet

High strength & corrosion resistance.

A286 is a nickel-chromium austenitic stainless steel sheet product that is iron-based and precipitation-hardened. The alloy should be considered for applications where a combination of high corrosion resistance and strength is required.

The alloy's general corrosion and oxidation resistance are good, and A286 provides superior hardness when compared to other nickel-based stainless steels. The material finds typical use in lower stress applications at high temperatures as the alloy retains its strength at elevated temperatures. The formability and machinability of the product are also good. Engineering examples utilising A286 stainless steel sheet include gas turbine components, jet engine parts and thrust nozzles.

Smiths Advanced Metals stocks [A286 stainless steel sheets](#) in the solution heat-treated condition and various thicknesses. We also process your A286 sheets in-house at our central warehouse in Biggleswade.



Grades / Specifications

- AMS5525
- GE B50T12, GE B50T81
- UNS S66286
- NACE MR0103, NACE MR0175

Benefits

- Good formability
- Excellent corrosion resistance up to 704°C
- Good machinability
- Harder than many nickel-based alloys

* Chemical Composition (weight %)

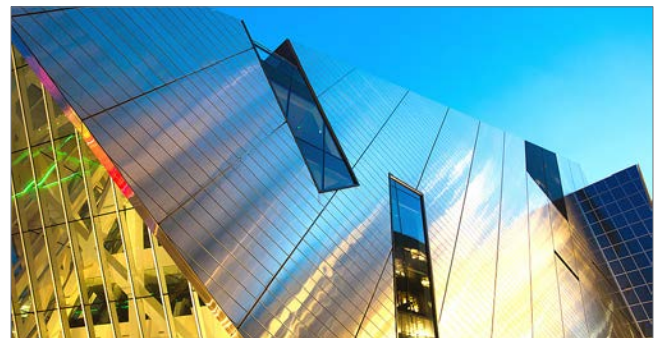
	C	Mn	P	S	Si	Co	Cr	Ni	Mo	Ti	V	Al	B	Fe
min.							13.50	24.00	1.00	1.90	0.10		0.003	Bal
max.	0.08	2.00	0.025	0.025	1.00	1.00	16.00	27.00	1.50	2.35	0.50	0.35	0.010	

* As per AMS 5525

Sheet Processing

Our in-house guillotining services ensure you receive your products to your size requirements.

We guillotine stainless steel sheets from 0.45mm to 6mm thickness and provide a vinyl coating service where a protective film is applied to the product, protecting the material from damage in transit. The vinyl coating service is essential if the aesthetic integrity of the material needs to be maintained, particularly if used in architectural applications.

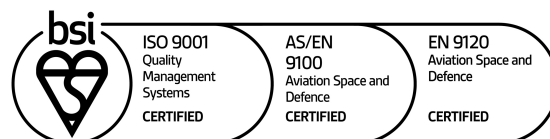


www.smithsadvanced.com

info@smithsadvanced.com



Stratton Business Park,
London Road, Biggleswade,
Bedfordshire SG18 8QB
Tel: **+44 (0) 1767 604710**



1930